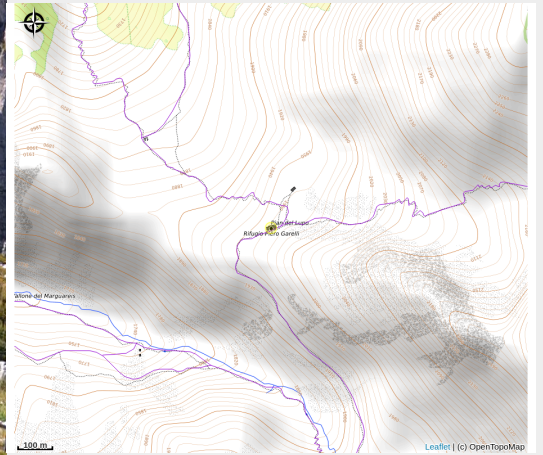




# Rifugio Piero Garelli



Attribution : Il Rifugio P. Garelli (Archivio APAM)



*Piero Garelli Refuge Location Pian del Lupo - Chiusa Di Pesio Modern and welcoming refuge whose architecture, which recalls the profiles of the Marguareis massif, fits perfectly into the surrounding environment*

## Useful information

Category : Mountain Hut

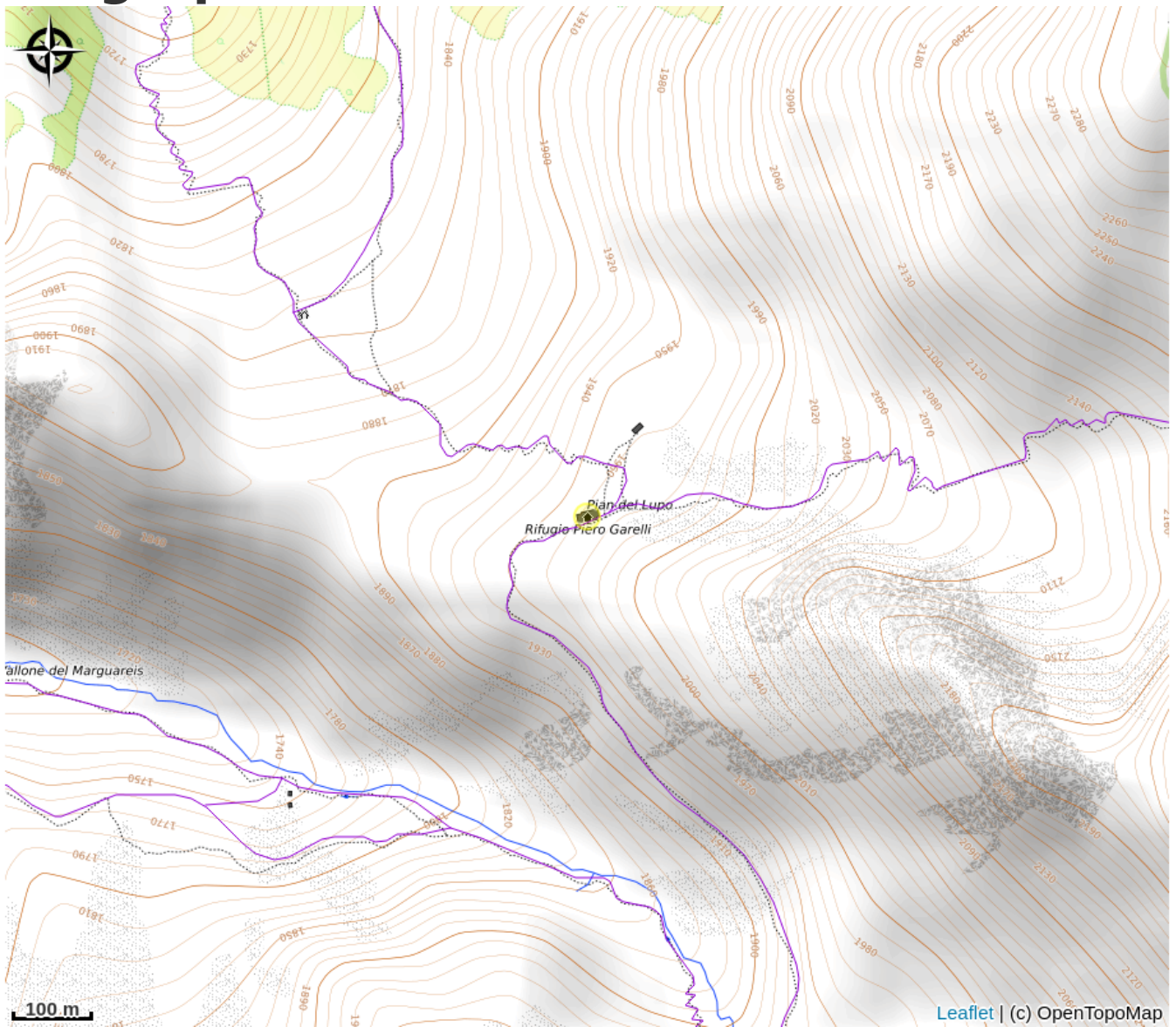
# Description

The current refuge was inaugurated in 1991 in place of the old structure which was destroyed in a fire in 1987.

The refuge is located in the Pian del Lupo grassy basin, in the heart of the Alta Valle Pesio and Tanaro Natural Park, at the base of the Marguareis massif.

Varied cuisine: for vegetarians and intolerances, availability of alternative menus on request.

# Geographical location



# All useful information

## Practical info

The Refuge has about 90 beds for guests and 4 for management. It has 9 rooms with 6, 8, 10, 12, 16 seats.

For overnight stays, the Refuge provides a bed with mattress, pillow and blankets, and it is required to have a personal sheet or sheet. If it is not possible to bring this equipment to the top, at the Refuge it is possible to buy disposable sheets or rent a sheet bag or cotton sheets.

During the winter the refuge offers a structure with 12 beds equipped with blankets and pillows. Here you can also find rescue equipment and the emergency telephone.

Open from 15 June to 15 September, reservations are required until the end.

## Contact

Recapito durante periodo di apertura:

Telefono Rifugio: 0171 738078

Recapito gestore nel periodo di chiusura:

Sig. Guido Colombo

Via Piave 4

120 84 Mondovì (CN)

Telefono Cellulare: 339 7709937

<https://www.rifugiogarelli.com/>