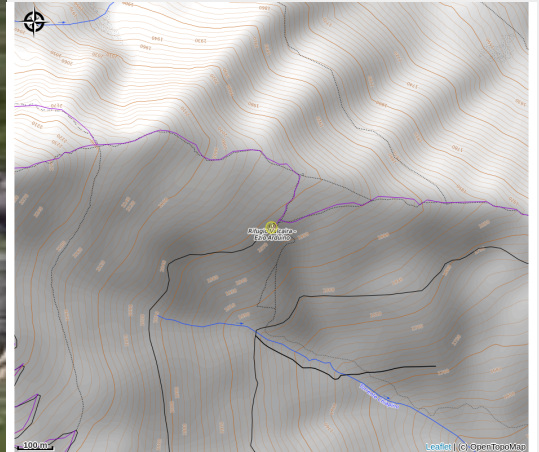




Rifugio Valcaira



Attribution : Il Rifugio Valcaira (Archivio APAM)



The refuge stands on the Costa Valcaira, on a grassy slope in a panoramic position on the eastern slopes of Pizzo d'Ormea.

Useful information

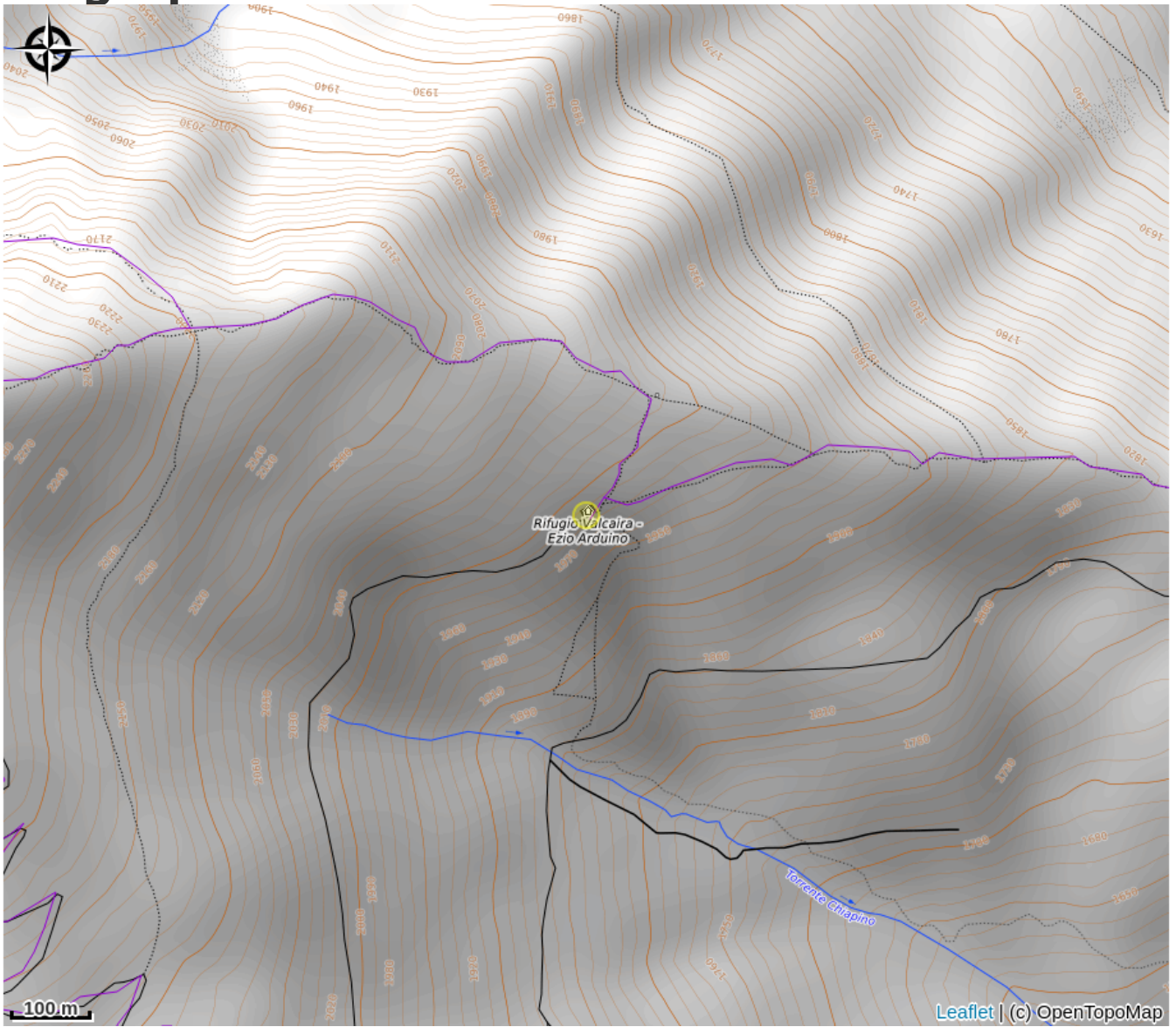
Category : Mountain Hut

Description

The Valcaira refuge stands at 2010 m asl on the southern slope of the homonymous coast which rises from Colle di Chionea in a NW direction towards the cone of Pizzo di Ormea. Near the building there are the highest springs of the Rio Archetti, which feeds the Rio Chiapino.

From the refuge you can enjoy a vast panorama of the Alta Val Tanaro and the Ligurian Sea from Sanremo to the Cinque Terre.

Geographical location



All useful information

Practical info

Capacity: 18 beds
Internal bathrooms
Drinking water yes
Provision of blankets; electricity; wood stove; gas cooker and crockery
Presence of winter room (YES/NO) 3 emergency places
Structure on structured itinerary
Cellular network coverage (operator) poor
Open from 15 June to 15 September, winter refuge always open

Contact

Località: Costa Valcaira, Ormea (CN)

Gestione: vedi "Apertura"

email: ormea@libero.it

web: <https://www.caiormea.it/il-rifugio-valcaira/>

caiormea@libero.it

<https://www.caiormea.it/il-rifugio-valcaira/>