

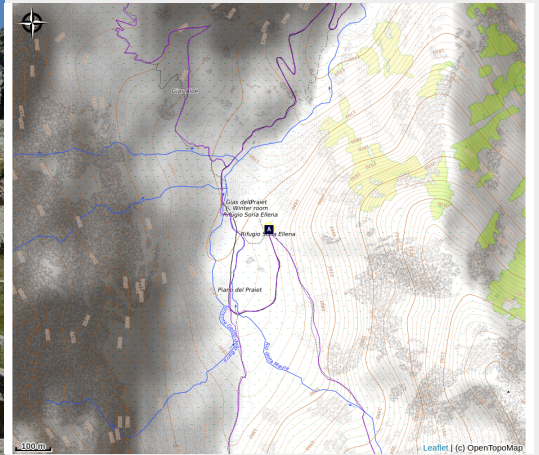


Rifugio Soria - Ellena

Parco Naturale Alpi Marittime



Attribution : Le refuge Soria (Augusto Rivelli)



The Soria-Ellena refuge takes its name from two mountaineers, Edoardo Soria and Gianni Ellena, very active in the mountains of Valle Gesso from the end of the 1920s to the 1940s and authors of new routes on Corno Stella.

Useful information

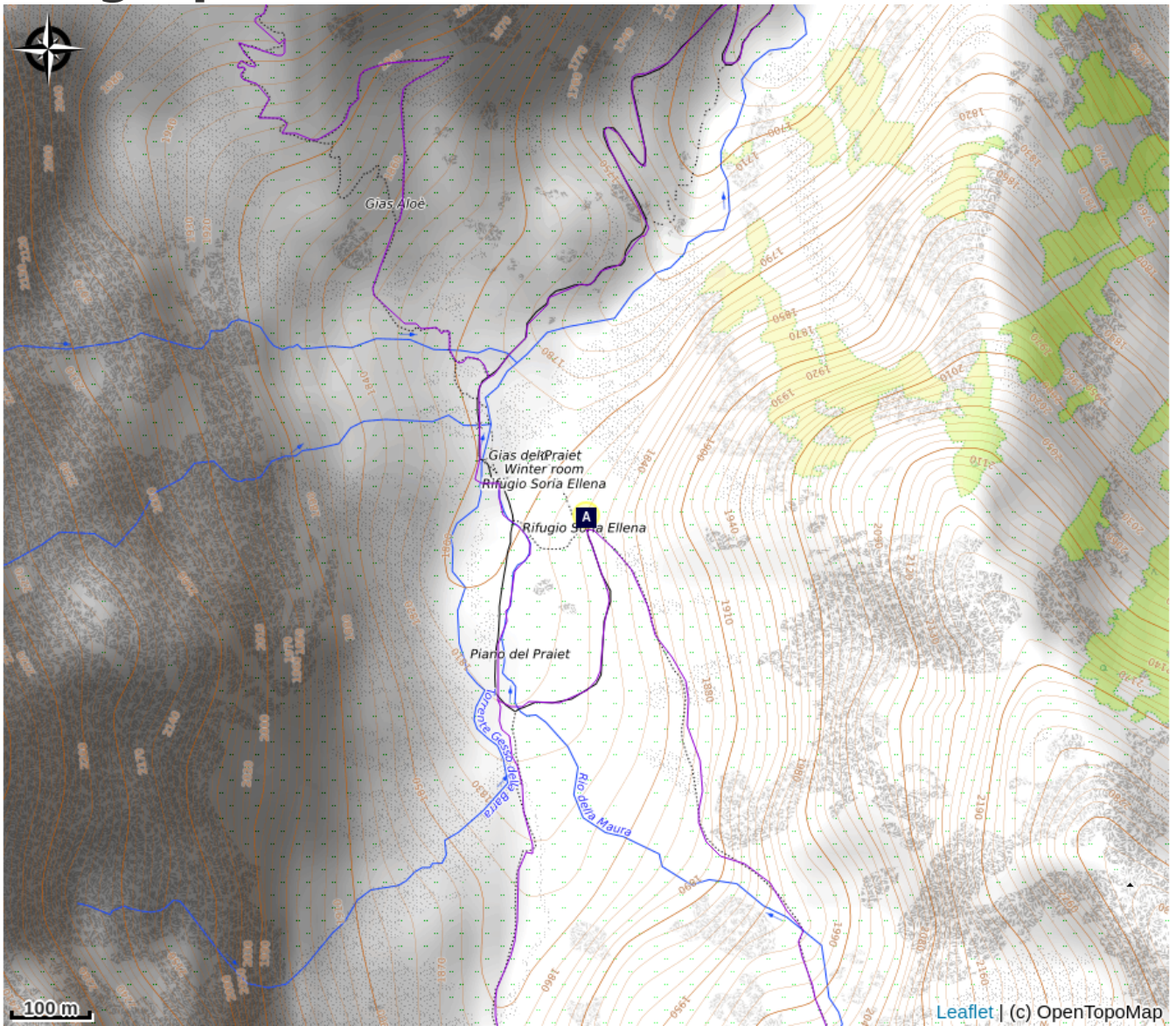
Category : Mountain Hut

Description

Owned by the C.A.I. of Cuneo, the refuge is a solid construction partly in exposed stone and partly plastered with a sheet metal roof. It was inaugurated on 10 September 1961. It has about fifty beds in rooms and a dormitory. It has indoor and outdoor toilets, hot water showers, heating and telephone service.

There is no winter room.

Geographical location



All useful information

Practical info

Capacity: 20 beds, and rooms for 4, 5 and 6 people

Open: June 15 to September 15

Low season: from October 15 to April 15: reservation required on weekends.

Wi-Fi access

Traditional cuisine, friendly atmosphere

Packed lunches and panini on request

For more information, visit the shelter's website

Contact

Informazioni e prenotazione

Pian del Praiet
12010 San Giacomo di Entracque CN

Tél: +39 0171978382 / +39 3516743073

Gestore: Luca Galfré

rifugiosoria1840@gmail.com

<http://www.rifugiosoriaellena.com/>