

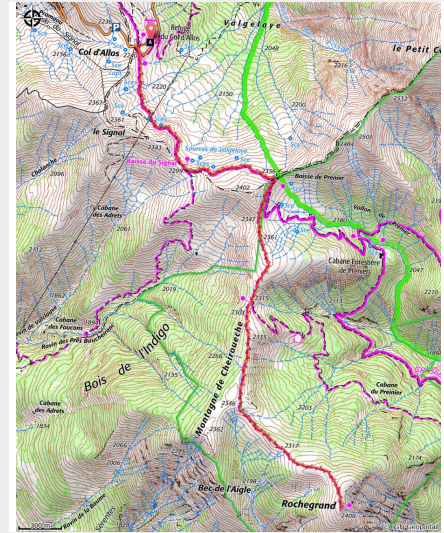


Rochegrand from the Col d'Allos

Vallée haute Ubaye - Uvernet-Fours



La Grande Sélane, (2909 m), depuis le sommet de Rochegrand, (2409 m). (Mathieu ANCELY)



Accessible from the Col d'Allos via the summer pastures of the herds, the summit of Rochegrand – the viewing point of Haut Verdon – allows you to discover a superb landscape.

From Rochegrand, a genuine 360° panoramic view of the great peaks which tower over the Val d'Allos awaits you: Cimet, Mont Pelat, Autapie, Grande Sélane... you will not miss a single one.

Useful information

Practice : Hiking

Duration : 4 h 30

Length : 9.7 km

Trek ascent : 363 m

Difficulty : Easy

Type : Round trip

Themes : Peak, Refuge, Viewpoint

Accessibility : Joëlette, Wheelchair

Trek

Departure : Col d'Allos refuge

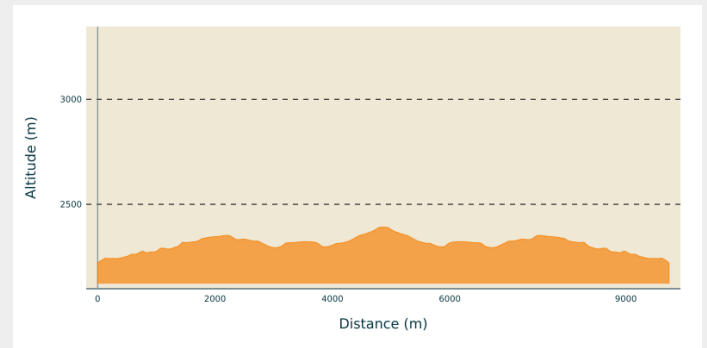
Arrival : Rochegrand

Markings :  GRP

Cities : 1. Uvernet-Fours

2. Allos

Altimetric profile



Min elevation 2222 m Max elevation 2391 m

From the carpark at the refuge of the Col d'Allos, head up the mountain. Head left onto the path which leads to "Baisse de Prenier". You will cross Alpine pastures which provide beautiful views over the Ubaye Valley.

Go over Baisse de Prenier and continue along the path which heads south; The village of La Foux is nestled away down below on the right.

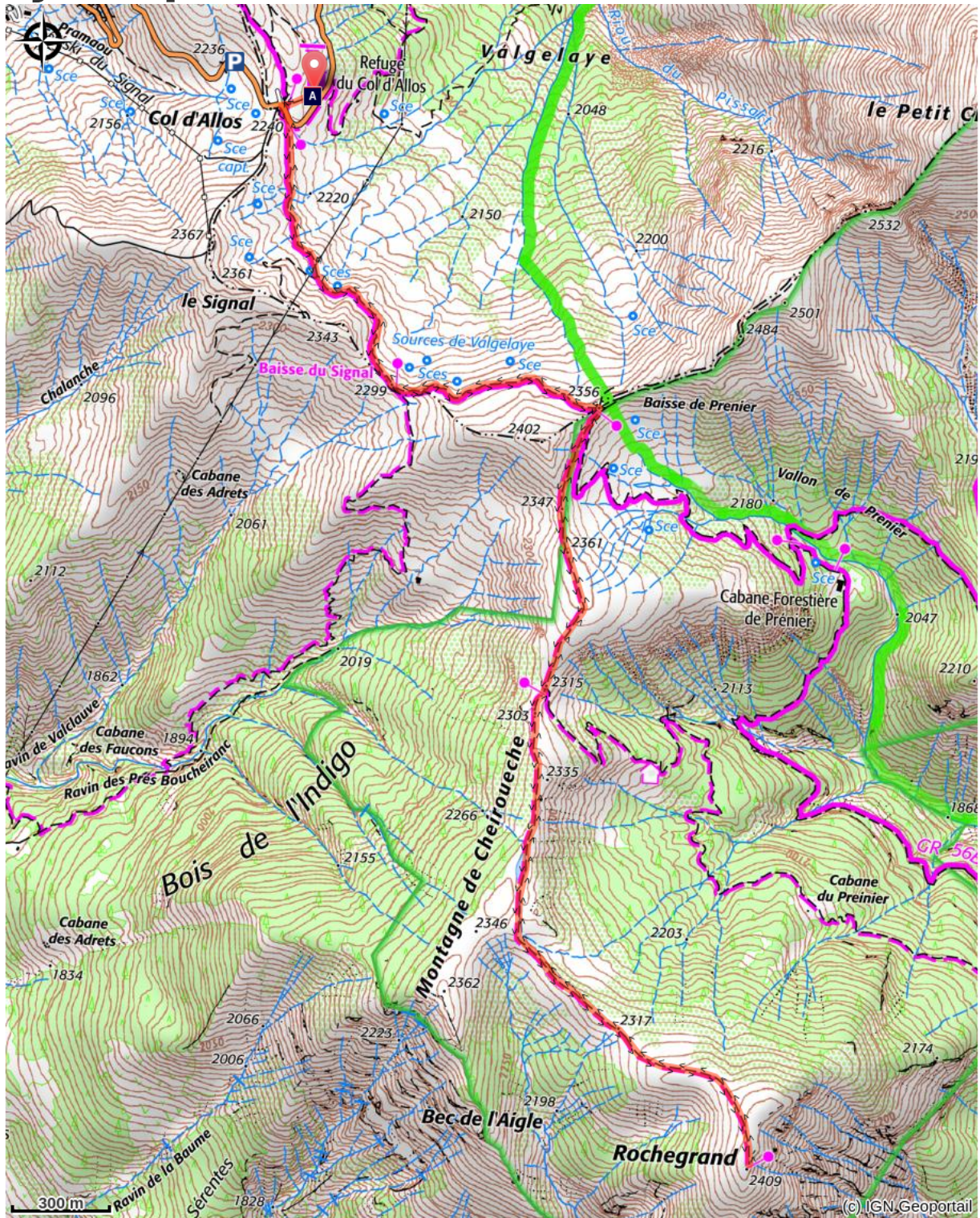
Go past the path on the left, heading down to Allos, and continue on the Crête de Cherouèche heading towards the Crête de Rochegrand, whose domed peak can be seen.

At the end of the route, the path slopes gently upwards to reach the summit.

From Rochegrand, you will have a genuine 360° panoramic view: Cimet (3020m), Mont Pelat (3051m), Autapie. To the north stands Grande Séolane (2909m) with its characteristic shape and, as a backdrop, the glaciers of the Écrins mountains can be seen in clear weather.

Follow the same route for the return journey.

On your path...



 Col d'Allos refuge (A)

All useful information

Advices

A hike which is appropriate for families, but keep an eye on children once you reach the summit.

This is an area where sheep and cows are put out to pasture in the summer: remember to shut gates, don't go too close to the herds and keep dogs on their leads.

How to come ?

Transports

Lignes départementales dans les Alpes-de-HauteProvence, Lignes régulières / hebdomadaires Digne-les-Bains, Barcelonnette, Larche et Digne-les-Bains, Colmars, Allos.

Service de navettes gratuites dans le Val d'Allos (Transports Haut-Verdon Voyages) : <https://www.valdallos.com/bus-station.html>

Access

Col d'Allos, 14km north of Allos via the mountain road.
Park your vehicle close to the mountain and the refuge.

Advised parking

Col d'Allos carpark

Accessibility

 Joelette  Wheelchair

 **Information desks**

Office du tourisme du Val d'Allos

Place de la coopérative, 04260 Allos

info@valdallos.com

Tel : 04 92 83 02 81

<https://www.valdallos.com>

On your path...



Col d'Allos refuge (A)

Warden: mid-June to mid-September

Capacity: 40

- Full board: 56€/person
- 1/2 board: 39€/person
- Night (with shower): 19€/person
- Breakfast: 7€/person

Tel: 04 92 83 85 14

Mobile: 06 71 59 11 81

<http://refuge-col-dallos.fr>

Val d'Allos Tourism Office: 04 92 83 02 81

Attribution : emmanuel.gastaud