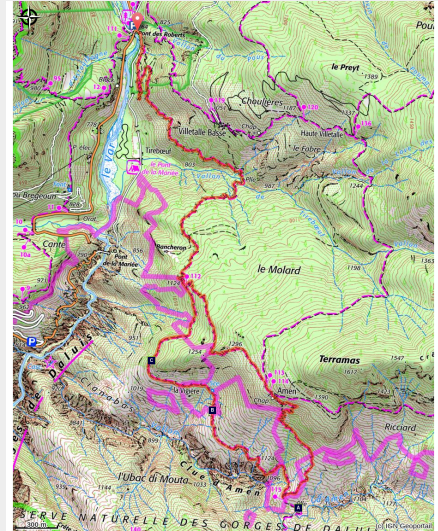




Amen Circuit

Vallées haut-Var&Cians - Guillaumes



Cascade d'Amen dans la cluse du même nom. Blocs de pélites rouge entassés par les crues. Etiage estival. (Philippe RICHAUD)

This circuit in the medium-sized mountains takes place along path cut in the rock faces of the Daluis and Amen gorges, in a rocky and warm Mediterranean environment.

With the red of the bedrock, the turquoise and blue of the minerals it harbours, the yellow gleam of the gold which is so sought after and the flowering broom, the green of the euphorbia plants and the black of the mining tunnels, the Amen circuit is a natural portrait, full of colours and history.

Useful information

Practice : Hiking

Duration : 6 h

Length : 13.2 km

Trek ascent : 797 m

Difficulty : Medium

Type : Loop

Themes : Fauna, Geology, Viewpoint

Trek

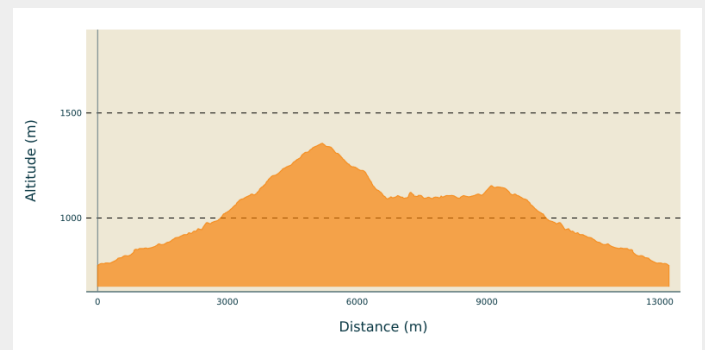
Departure : Pont des Roberts,
Guillaumes

Arrival : Pont des Roberts, Guillaumes

Markings :  PR

Cities : 1. Guillaumes

Altimetric profile



Min elevation 773 m Max elevation 1356 m

From the carpark, cross the D2202 and head along the left bank of the Var, on the little Tireboeuf road which leads to the campsite.

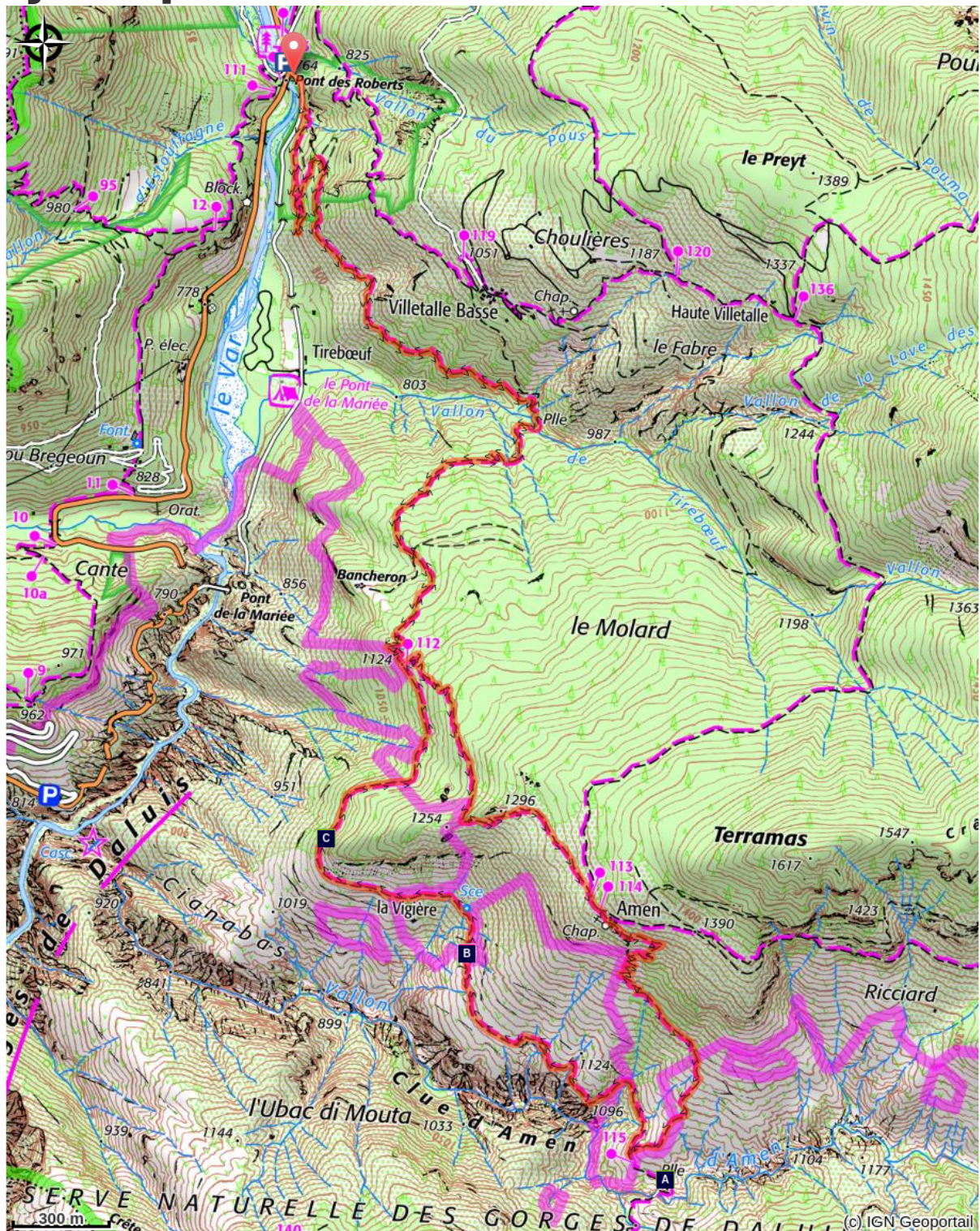
The track (CD16) is located immediately on the left and is indicated by marker 111.



Head upwards following the yellow markers and cross the Tireboeuf Valley via a small stone bridge. At the following crossroads (marker 112), leave CD16 and turn left onto the climb towards Amen. Make sure that you do not lose the track as it heads down towards the Amen water gap, through the scrubland.

At marker 113 continue towards Amen. The hamlet is located a few hundred metres further along. Go through the village then head down towards the Amen water gap, indicated by marker 114.

For the return journey to Guillaumes, take the gorge road CD16 which joins up with the itinerary you used on the way up.

On your path...



-  Damaged garrigue (A)
-  Short-toed snake eagle (C)

-  The Daluis Nature Reserve (B)

All useful information

Advices

Make sure that you have plenty of water with you because this path is very exposed and to be avoided on days when it is very hot.

Be aware that part of the itinerary enters into the Daluis Gorge Nature Reserve. Please ensure that you respect the rules applying to this area.

For further information: <http://www.reserves-naturelles.org/gorges-de-daluis>

How to come ?

Transports

Bus 675 Nice Grand Arénas - Entraunes

Consulter les horaires sur le site [Zou](#)

Access

Coming from the Daluis Gorges on the D2202, 1.5km after Guillaumes on the small road to Tireboeuf.

Park at the rest area, just after the Pont des Roberts on the left.

Advised parking

Parking area, Pont des Roberts

Information desks

Office du tourisme de Guillaumes

25 Place de Provence, 06470 Guillaumes

guillaumestourisme@gmail.com

Tel : 04 93 05 57 76

<http://www.guillaumes.fr>

On your path...



✿ Damaged garrigue (A)

It is thus that ecology and vegetation experts defined the vegetation on the southern slope of this valley, due to the destruction of a primitive forest of downy oaks, some of which can be seen alongside the track today. The abandonment of agriculture and the diminution of land used for pasture in the area have helped the forest regain some ground on this slope. Garrigue is an intermediate form, with bushes such as boxwoods, shadbush and broom. Its golden flowers provide a harmonious contrast in spring with the red of the pelites.

Thyme, lavender and spurge are a reminder that the Mediterranean is close.

Attribution : Marion BENSA



📍 The Daluis Nature Reserve (B)

Founded in 2012, the Regional Nature Reserve of the Daluis Gorges was the first reserve in the department of Alpes Maritimes. Located between the Mercantour National Park and the Mediterranean Sea, it is very interesting in geological, mineralogical, natural and cultural terms.

A majestic gateway between the Provence and the Alps, the nature reserve provides the breath-taking spectacle of the red gorges hollowed out by the Var river, with their giddy pelite cliffs.

Attribution : Guy LOMBART



🦅 Short-toed snake eagle (C)

Beyond the exceptional nature of its landscape, the site of the Daluis gorges also has a wide diversity of flora and fauna, with several plant and animal species which are of interest on a European scale. With a wingspan of around 1.7m, the underside of this snake-eating bird of prey's wings are white with thin black stripes; it is estimated that a family of short-toed snake eagles (2 adults and a single juvenile) eat five serpents per day. A migratory species, it comes to reproduce in these mountains at the end of March, tirelessly flying over moor and scree seeking out an adder or a grass snake.

Attribution : Jean-Claude MALAUSA