

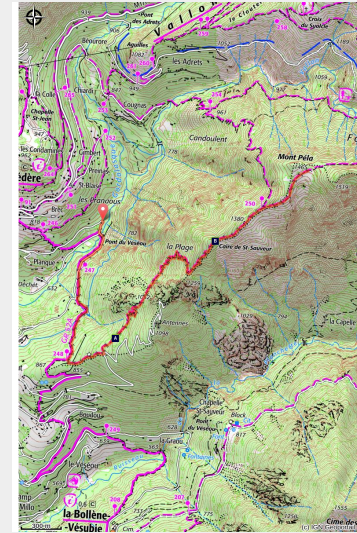


# Le Mont Péla and the hop-hornbeam forest

Vallée haute Vésubie - Belvédère



Depuis le sommet, vue plongeante sur le village semi-perché de la Bollène-Vésubie (SARRUT Jacques)



*This hike, which features a good deal of climbing, takes place in a forest which represents a meeting point between a Mediterranean environment and the first slopes of the Alps.*

On this hike, you will come across a very singular tree, the hop-hornbeam: in France, this tree is only found in the Alpes-Maritimes area and in Corsica. At the summit of Mont Péla, you will have a panoramic view of the villages and high peaks of the valley.

## Useful information

---

Practice : Hiking

---

Duration : 6 h

---

Length : 9.1 km

---

Trek ascent : 780 m

---

Difficulty : Hard

---

Type : Round trip

---

Themes : Flora, Peak, Viewpoint

---

# Trek

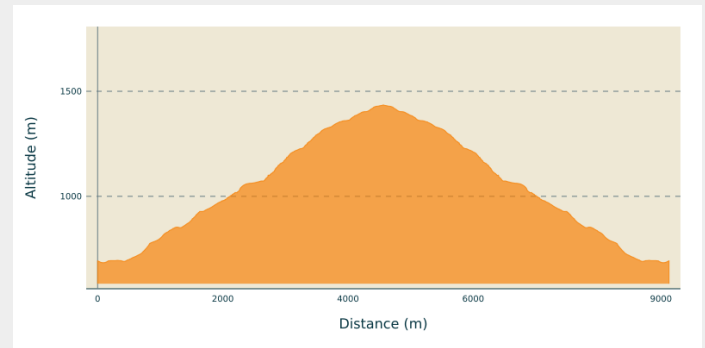
**Departure** : Véséou Bridge

**Arrival** : Mont Péla

**Markings** :  GR  PR

**Cities** : 1. Belvédère  
2. La Bollène-Vésubie

## Altimetric profile



Min elevation 684 m Max elevation 1435 m

The departure point is at marker 247. The start of the itinerary is along the GR52A (red and white markers). Initially, you will be walking close to the Gordolasque mountain stream. The path then rises through the forest on a north-west facing slope until you reach marker 248.

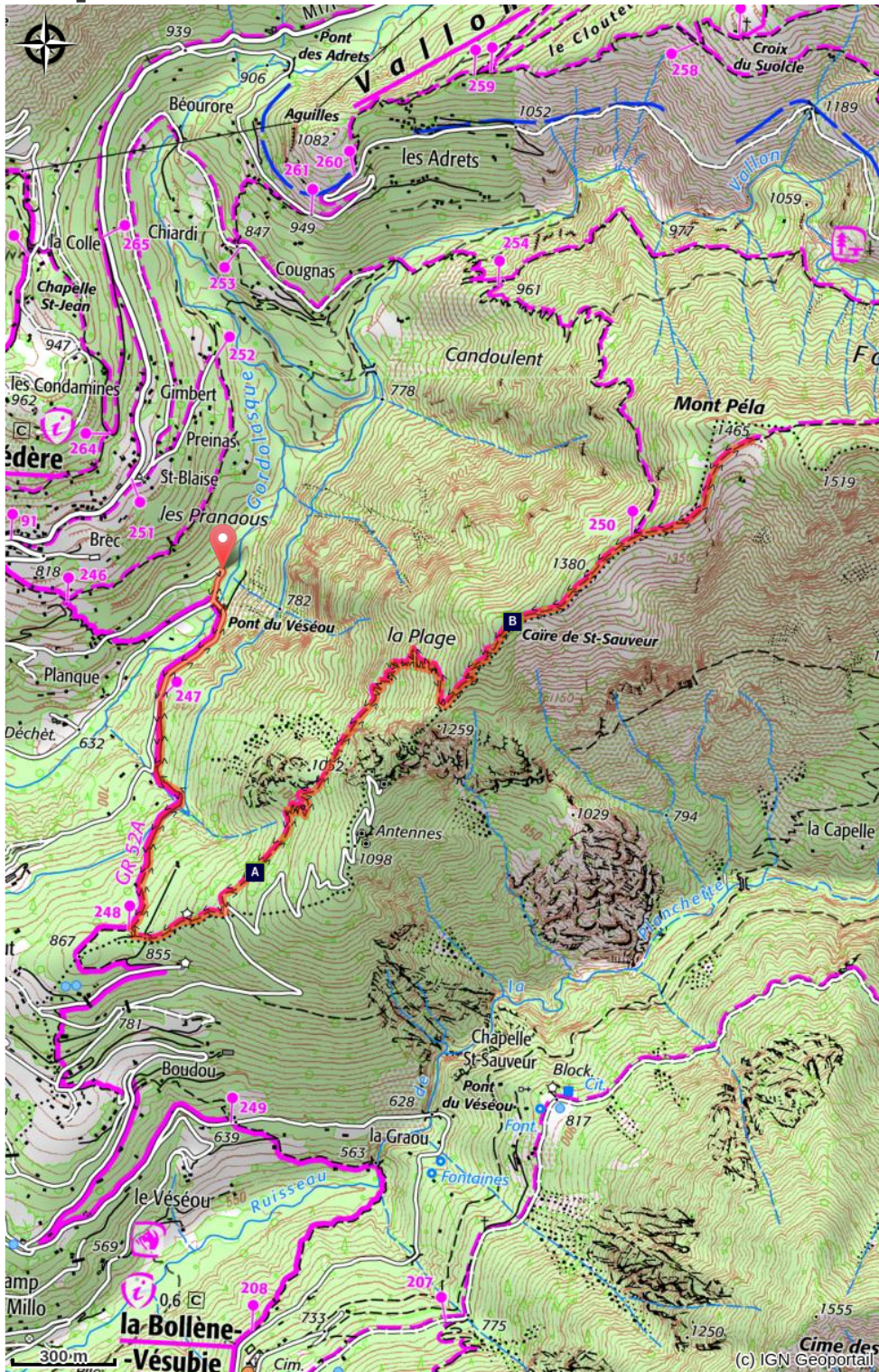
At the marker, leave GR52A and head left, crossing a flatter grassy section. The path follows a break in the foliage for 300 metres where you can see the former military installations which were part of the Maginot Line then leads onto a small road. Follow this road for a few metres then take the which is on the left.

Enter the hop-hornbeam forest. At around 1250m altitude, then end of this hike is on the crest which separates the north- and the south-facing slopes. The path runs along this crest until it reaches Mont Péla (1465m) via marker 250.

Follow the same route for the return journey.



# On your path...



 Hop-hornbeam (A)

 Caïre de Saint-sauveur (B)

# All useful information

## **Advices**

When you are crossing a scree, be careful: the path remains flat while crossing a big bank, when you reach the edge of it go down on the right-hand side and pass close to the ruins.

## **How to come ?**

### Access

From Saint-Martin de Vésubie, head down the M2565 towards Lantosque. After Roquebillière-le-vieux, go left towards Belvédère (M71). Continue for 650m and at the exit of the first left-hand bend, take the narrow road on the right signposted toward Véséou. Continue on the left at the following junction.

After approximately 1.5 km, you can park near to the bridge or marker 247.

## **Information desks**

### **Office de Tourisme Métropolitain - Bureau d'information de Belvédère**

Rue Victor Maurel, 06450 Belvédère

[info.belvedere@nicedazedazurtourisme.com](mailto:info.belvedere@nicedazedazurtourisme.com)

Tel : 04 93 03 51 66

<https://www.explorenicedazedazur.com/>

### **Office de Tourisme Métropolitain - Bureau d'information de la Bollène- Vésubie**

Place du Général de Gaulle, 06450 La  
Bollène Vésubie

[info.labollenevesubie@nicedazedazurtourisme.com](mailto:info.labollenevesubie@nicedazedazurtourisme.com)

Tel : 04 93 03 60 54

<https://www.explorenicedazedazur.com/>

# On your path...

---



## ✿ Hop-hornbeam (A)

The hop-hornbeam is also known as *Ostrya*. This species, which is characteristic of north-facing, shady slopes, is generally found between altitudes of 300 to 1000m and the only ones which can be found in France in the far south-east of the country due to the tree's relative tolerance of drought conditions.

Attribution : LOMBARD Guy

---



## ✿ Caïre de Saint-sauveur (B)

A Caïre de Saint-Sauveur, you will be able to look over the southern slope of the Malagratta valley, with its moorland landscape containing juniper bushes, boxwood, lavender and broom. This habitat, notable for its Mediterranean influence, is grazed by a herd of sheep. It is sometimes subject to controlled burning.

Attribution : GUIGO Franck